

Vendor: Cisco

Exam Code: 300-620

Exam Name: Implementing Cisco Application Centric Infrastructure (DCACI)

Certification: CCNP Data Center

Total Questions: 347 Q&A (View Details)

Updated on: Apr 20, 2026

<https://www.leads4pass.com/300-620.html>

Question 1:

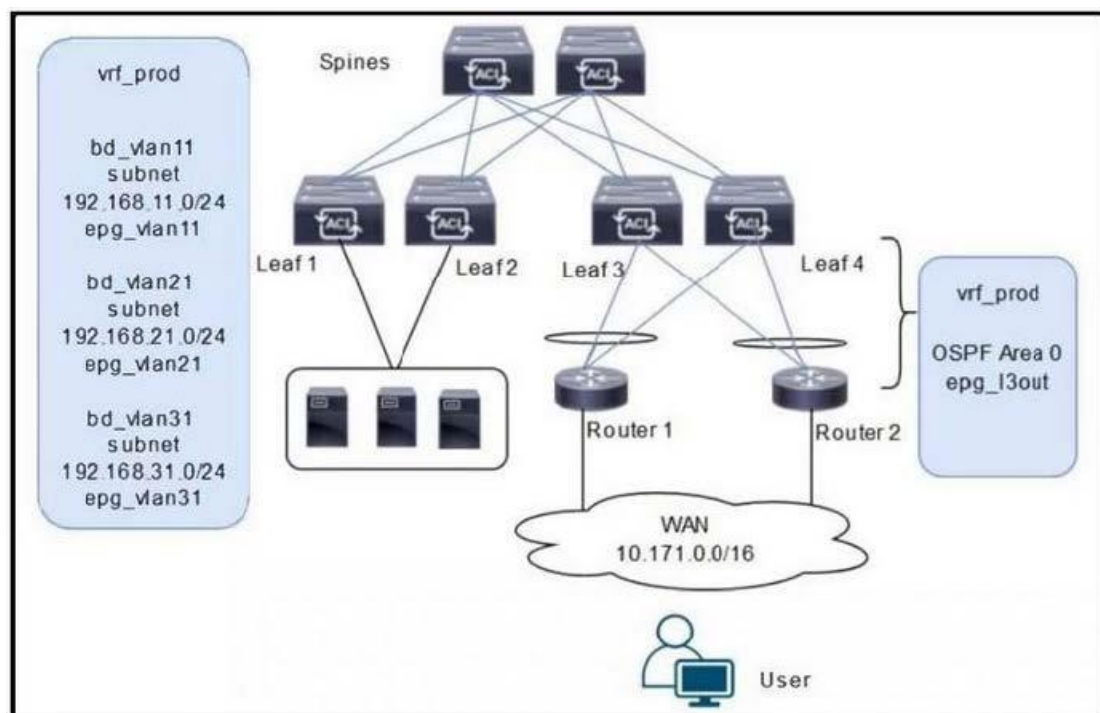
Which endpoint learning operation is completed on the ingress leaf switch when traffic is received from a Layer 3 Out?

- A. The source MAC address of the traffic is learned as a local endpoint.
- B. The source MAC address of the traffic is learned as a remote endpoint.
- C. The source IP address of the traffic is learned as a remote endpoint.
- D. The source IP address of the traffic is learned as a local endpoint.

Correct Answer: A

Question 2:

Refer to the exhibit.



A customer is deploying a WAN with these requirements:

1.

Routers 1 and 2 must receive only routes 192.168.11.0/24 and 192.168.21.0/24 from the Cisco ACI fabric.

2.

Reachability to the WAN users must be permitted only for the servers that are located in vrf_prod.

Which settings must be configured to meet these objectives?

A. Configure the subnets 192.168.11.0/24 and 192.168.21.0/24 as Private to VRF. Configure the subnet 192.168.31.0/24 as Advertised Externally. Configure an EPG subnet 0.0.0.0/0 as Shared Route Control Subnet.

B. Configure the subnets 192.168.11.0/24 and 192.168.21.0/24 as Private to VRF. Configure the subnet 192.168.31.0/24 as Advertised Externally. Configure an EPG subnet 0.0.0.0/0 as External Subnets for External EPG.

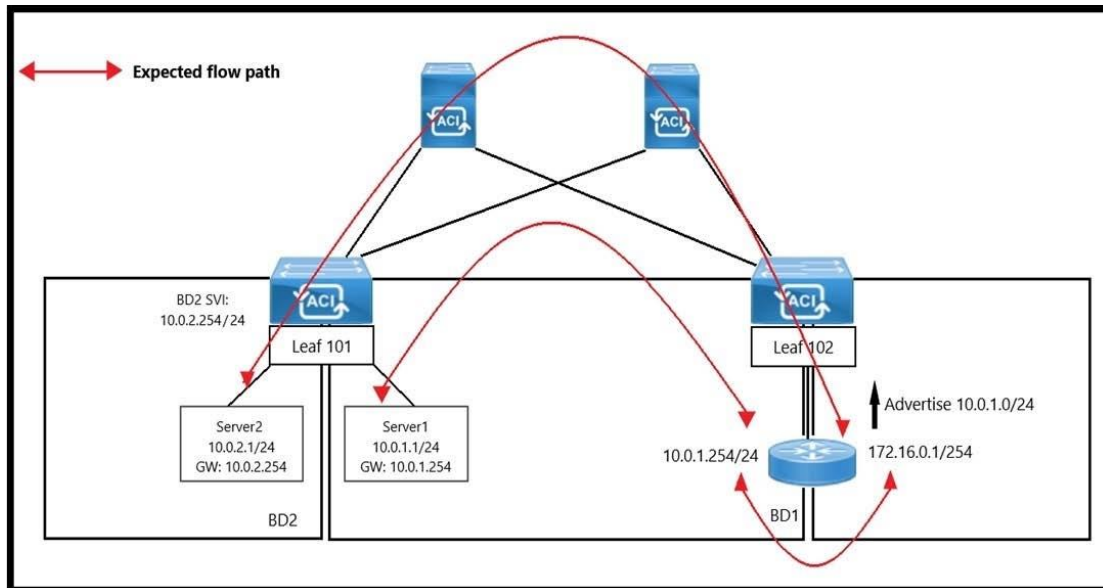
C. Configure the subnets 192.168.11.0/24 and 192.168.21.0/24 as Advertised Externally. Configure the subnet 192.168.31.0/24 as Private to VRF. Configure an EPG subnet 0.0.0.0/0 as External Subnets for External EPG.

D. Configure the subnets 192.168.11.0/24 and 192.168.21.0/24 as Advertised Externally. Configure the subnet 192.168.31.0/24 as Private to VRF. Configure an EPG subnet 0.0.0.0/0 as Shared Route Control Subnet.

Correct Answer: C

Question 3:

Refer to the exhibit.



An engineer wants to initiate an ICMP ping from Server1 to Server2. The requirement is for the BD1 to enforce ICMP replies that follow the expected path. The packets must be prevented from taking the direct path from Leaf1 to Server1. Which action must be taken on BD1 to meet these requirements?

- A. Set L2 Unknown Unicast to Flood.
- B. Set L2 Unknown Unicast to Hardware Proxy.
- C. Disable Unicast Routing.
- D. Enable ARP Flooding.

Correct Answer: C

Question 4:

Refer to the exhibit.

ID: 4295457803

Description: Failed to form relation to MO qosdppol-default of class qosDppPol in context

Severity: cleared

Affected Object: **uni/tn-Raccoon_City/out-L3Out_Demo/Inodep-L3Out_Demo_nodeProfile/lifp-L3Out_Demo_interfaceProfile/rsingressQosDppPol**

Delegated From:

Created: 2021-02-05T19:29:08.730+00:00

Code: F2044

Type: Config

Cause: resolution-failed

Change Set: state (Old: missing-target, New: formed), tDn (Old: , New: uni/tn-common/qosdppol-default)

Action: modification

Domain: Infra

Life Cycle: Retaining

Count Fault Occurred: 1

Acknowledgement Status: false

An engineer configures an L3Out but receives the error presented. Which action clears the fault?

- A. Acknowledge the QoS-related error.
- B. Associate a custom QoS class.
- C. Create a custom QoS policy.
- D. Set the QoS policy to Level 3.

Correct Answer: A

Because performing those actions will prevent the fault from appearing again in the future, but will not clear the fault that is already present.

Question 5:

Which two actions does the Cisco ACI take when a bridge domain is configured with a subnet and unicast routing is enabled? (Choose two.)

- A. enables routing to and from that subnet
- B. disables the ARP flooding feature
- C. learns MAC and IP addresses
- D. stops remote endpoint learning
- E. discovers endpoints from data plane learning only

Correct Answer: AC

The Layer 3 Configurations tab of the bridge domain panel allows the administrator to configure the following parameters:

Unicast Routing: If this setting is enabled and a subnet address is configured, the fabric provides the default gateway function and routes the traffic. Enabling unicast routing also instructs the mapping database to learn the endpoint IP-to-VTEP mapping for this bridge domain. The IP learning is not dependent upon having a subnet configured under the bridge domain.

Subnet Address: This option configures the SVI IP addresses (default gateway) for the bridge domain.

Limit IP Learning to Subnet: This option is similar to a unicast reverse-forwarding-path check. If this option is selected, the fabric will not learn IP addresses from a subnet other than the one configured on the bridge domain.

Unicast Routing feature in ACI allows the Leaf Switches to learn the IP addresses associated with the Endpoint which are connected to ACI Fabric.

The Unicast Routing feature also enables IP Routing under the bridge domain (Similar to IP Routing Command in Nexus-OS/ Catalyst OS).

Question 6:

A Cisco ACI leaf switch learns the source IP address of a packet that enters the front panel port of the switch. Which bridge domain setting is used?

- A. ARP Flooding
- B. L3 Unknown Multicast Flooding - Flood
- C. L2 Unknown Unicast - Hardware proxy
- D. Unicast Routing

Correct Answer: D

Question 7:

Which protocol is used in the Cisco ACI fabric for automatic discovery?

- A. LLDP
- B. IS-IS
- C. CFS
- D. COOP

Correct Answer: A

Question 8:

A network engineer must backup the PRODUCTION tenant. The configuration backup should be stored on the APIC using a markup language and contain all secure information. Which export policy must be used to meet these requirement?

A.

Name:

Description:

Format:

Start Now:

Target DN:

Snapshot:

Scheduler:

Export Destination:

Modify Global AES Encryption Settings: **Enabled**

B.

Name:

Description:

Format:

Start Now:

Target DN:

Snapshot:

Scheduler:

Export Destination:

Modify Global AES Encryption Settings: **Enabled**

C.

Name:

Description:

Format:

Start Now:

Target DN:

Snapshot:

Scheduler:

Modify Global AES Encryption Settings: **Enabled**

D.

Name:

Description:

Format:

Start Now:

Target DN:

Snapshot:

Scheduler:

Modify Global AES Encryption Settings: **Enabled**

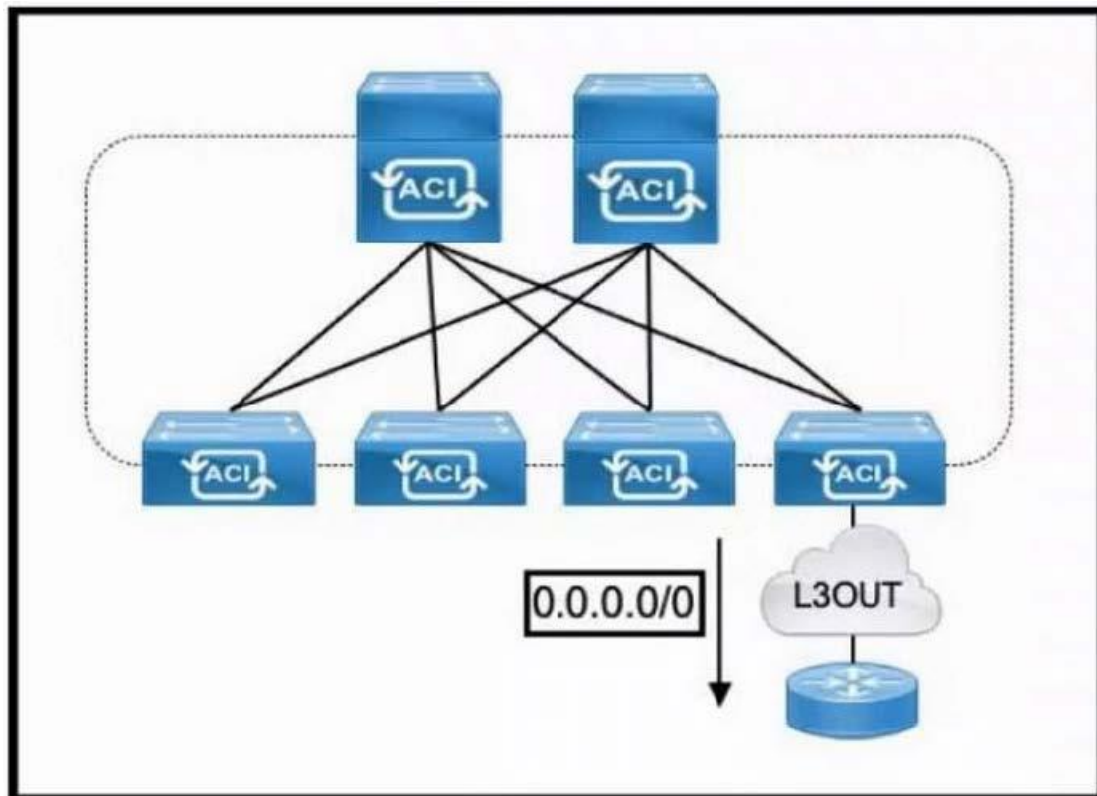
- A. Option A
- B. Option B
- C. Option C
- D. Option D

Correct Answer: D

Snapshots created for a single tenant do not include configurations from anywhere else in the fabric

Question 9:

Refer to the exhibit.



The default route is not present in the routing tables of the Cisco ACI leaf switches. All static and direct routes are currently being redistributed and advertised. Which action must be taken to advertise a default route on the eBGP L3Out?

- A. Enable a BGP peer prefix policy set to Always.
- B. Configure a static default route on the ACI node profiles with next-hop null.
- C. Create a Default Route Leak Policy on the L3Out.
- D. Implement an export route map matching 0.0.0.0/0.

Correct Answer: C

There are two methods to advertise a default route (0.0.0.0/0) from BGP L3Out to the outside.

1.

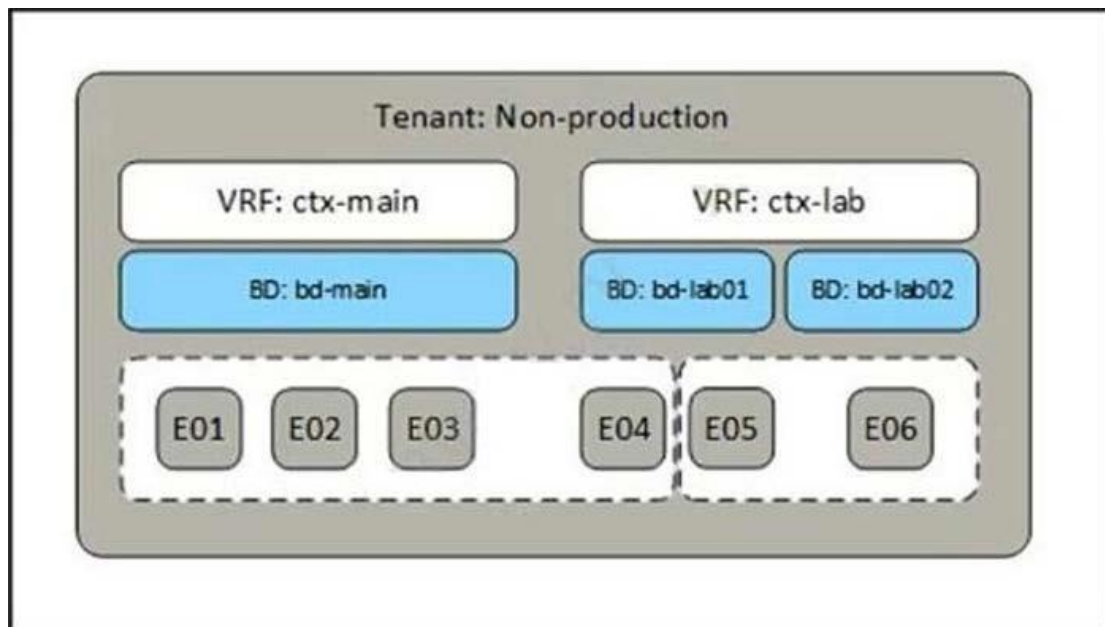
Transit Routing

2.

Default Route Leak Policy

Question 10:

Refer to the exhibit.



A network engineer must complete the Cisco ACI implementation based on the logical system design created by the systems architect. Which Cisco ACI object is required where the dotted line indicates to complete the task?

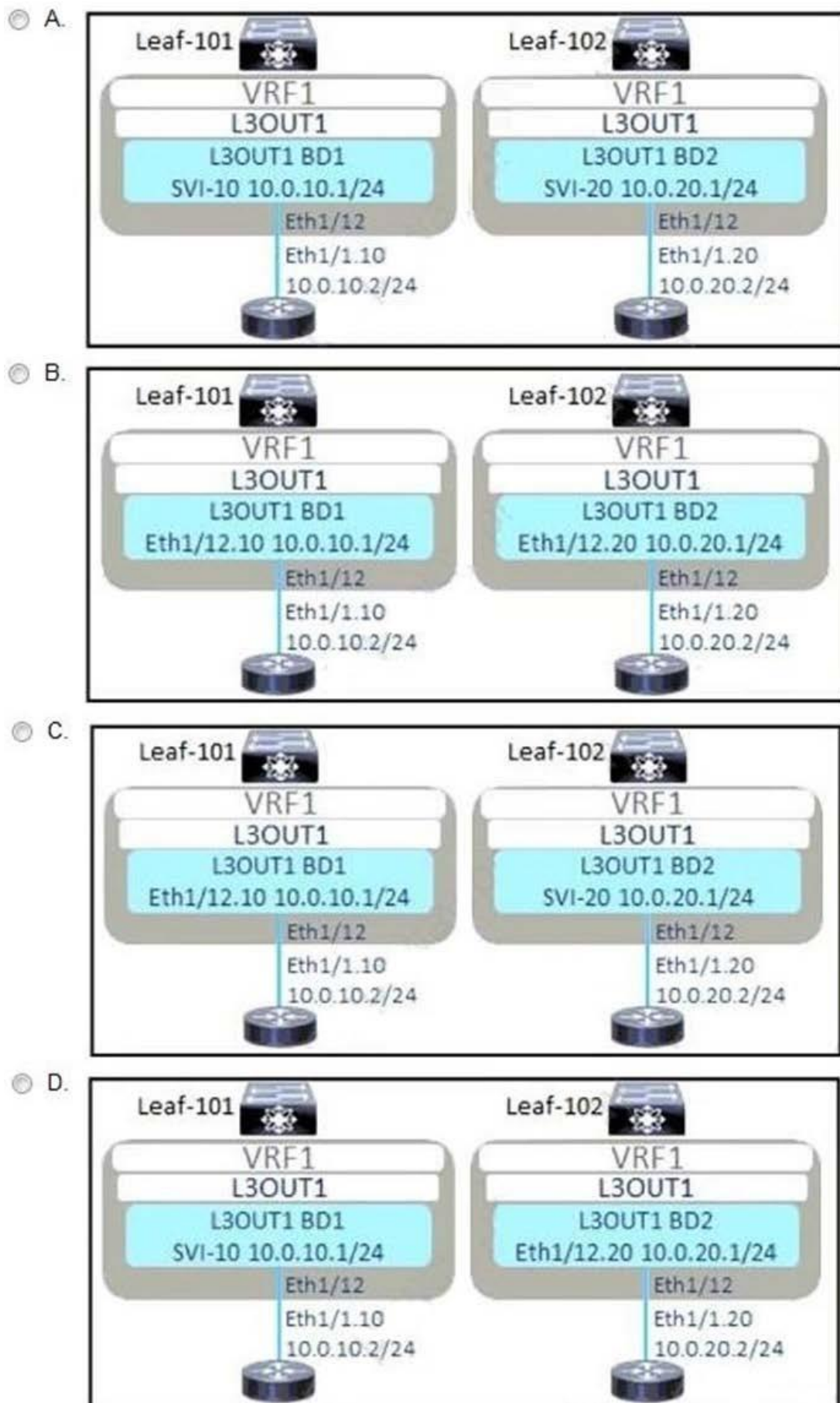
- A. contract
- B. application profile
- C. context
- D. attachable Access Entity Profile

Correct Answer: B

A tenant in the ACI object model represents the highest level object. A tenant consists of networking-related objects such as VRFs, bridge domains and subnets, and policy-related objects such as application profiles, EPGs, and contracts.

Question 11:

The customer is looking for redundant interconnection of the existing network to the new ACI fabric. Unicast and multicast traffic must be routed between the two networks. Which L3Out implementation meets these requirements?



- A. Option A
- B. Option B
- C. Option C
- D. Option D

Correct Answer: B

PIMv4/PIM6 is supported on Layer 3 Out routed interfaces and routed subinterfaces including Layer 3 port-channel interfaces. In the 5.2(2) release and earlier, PIMv4/PIM6 is not supported on Layer 3 Out SVI interfaces. In the 5.2(3) release and later, PIMv4/PIM6 is supported on Layer 3 Out SVI interfaces

https://www.cisco.com/c/en/us/td/docs/dcn/aci/apic/5x/l3-configuration/cisco-apic-layer-3-networking-configuration-guide-52x/ip-multicast-layer3-config-52x.html#id_21570

Question 12:

A Cisco ACI fabric with an ARP packet must ensure detection of silent hosts with an ARP packet. The current bridge domain is configured with hardware proxy and unicast routing. Which step must be taken on the bridge domain to complete the configuration?

- A. Set Optimized Flood for L3 Unknown Multicast.
- B. Enable Flood in the bridge domain for Multi Destination Flooding.
- C. Set L2 Unknown Unicast to Flood.
- D. Enable ARP Flooding in the bridge domain.

Correct Answer: D

The difference of enabling and disabling the ARP flooding option appears once ACI learns a silent host IP. One of the benefits of enabling ARP flooding is to be able to detect a silent IP that moved from one location to another without notifying an ACI leaf. Because the ARP request is flooded within the BD, even if the ACI leaf still thinks the IP is at the old location, the host with the silent IP would respond appropriately so that the ACI leaf can update its entry accordingly. If ARP flooding is disabled, the ACI leaf would keep forwarding the ARP request only to the old location until the IP endpoint ages out. On the other hand, the benefit of disabling ARP flooding is to be able to optimize traffic flow by sending the ARP request directly to the location of the target IP, assuming no endpoint moves without notifying its movement via GARP and such.

<https://www.cisco.com/c/en/us/solutions/collateral/data-center-virtualization/application-centric-infrastructure/white-paper-c11-739989.html#Silenthostsconsiderations>

Question 13:

An engineer associates EPG-A with a VMM domain and sets the Deployment and Resolution preferences to Immediate. The host that will generate endpoints for EPG-A is attached to Leaf-101 and Leaf-102 using eth1/1. However, no configuration for EPG-A appears to have been pushed to the leaf switches. Which action must be taken for the configuration to be pushed to Leaf-101 and Leaf-102?

- A. Enable CDP or LLDP on the host.
- B. Enable LACP on the leaf switch ports.
- C. Disable and enable eth1/1 on both leaf switches.
- D. Configure both ports for trunking.

Correct Answer: A

Resolution immediacy:

Immediate: The VLAN will be deployed on leaf interfaces only when hypervisors are detected through LLDP or CDP.

<https://learnduty.com/cisco-aci/cisco-aci-resolution-and-deployment-immediacy-explained/>

Question 14:

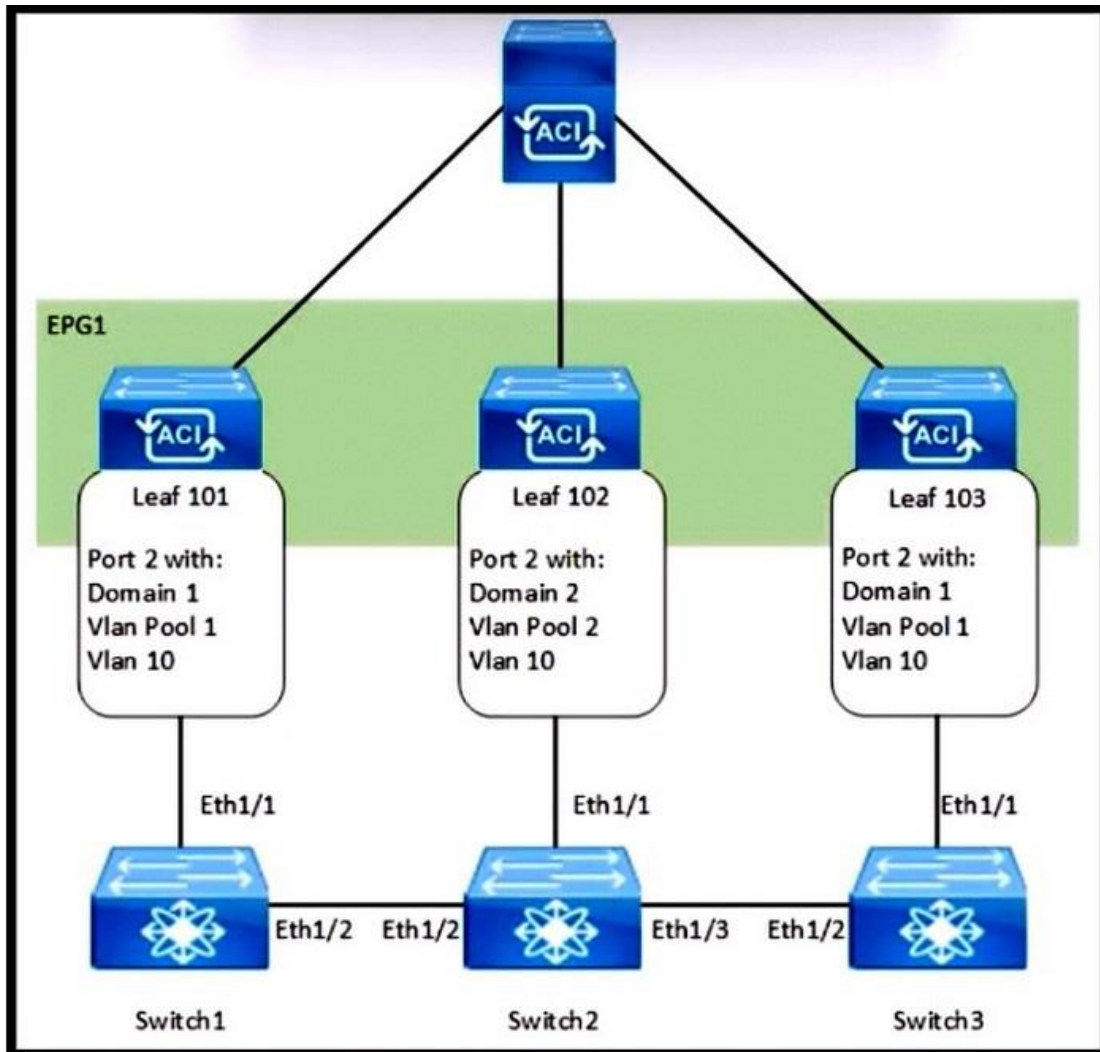
What is the minimum number of APICs does Cisco recommend to deploy in a production cluster?

- A. 1
- B. 3
- C. 4
- D. 5

Correct Answer: B

Question 15:

Refer to the exhibit.



How are the STP BPDUs forwarded over Cisco ACI fabric?

- A. Cisco ACI acts as the STP root for all three external switches.
- B. STP BPDUs that are generated by Switch2 are received by Switch1 and Switch3.
- C. STP BPDUs that are generated by Switch1 are received only by Switch3.
- D. Cisco ACI fabric drops all STP BPDUs that are generated by the external switches.

Correct Answer: C

LEAF2 VLAN 10 is from other domain and other vlan pool, so BPDUs from SW1 are not flooded to SW2, only to SW3.